



SedgeHammer is one of the only selective herbicide that will kill nutsedge in turf grass or landscaped beds.

Bring in your baskets from last season

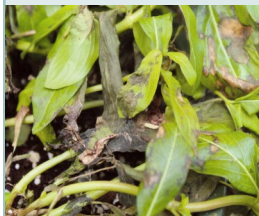
WE CAN REPLANT THEM



Delivery available



Caladiums and Vinca!



Caladiums and Vinca are now available!!

Vinca does not like to be over watered.

Overwatering can cause root rot & a soil fungus.

A Fungicide is crucial for seasonal color success!!

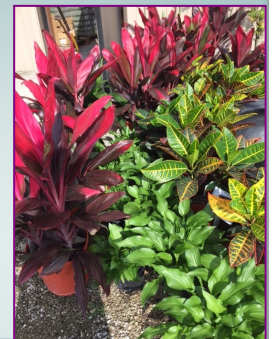
NELSON COLOR STAR is a fertilizer and fungicide in one! Apply to the ground before planting your seasonal color. A fungicide suppresses and controls soil borne funguses.



Another shipment of Tropicals just in!

Bougainvillea, Hibiscus (shrub & tree form), Croton Mandevilla, Ixora Brazilian Iris, and the list goes on

and
on
and
on!



Watering your lawn and shrubs.

Watering your lawn in the morning is ideal. It reduce loss off water due to evaporation and reduces the chance of developing a fungus.

Newly planted shrubs and trees will require more attention. Water these plants well and let them dry out slightly while they become acclimated.

