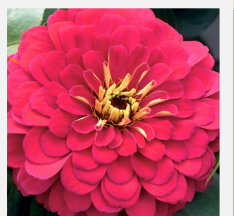


Time to prune your **BOXWOODS, AZALEAS, and HAWTHORNES.** Wait until they are finished blooming this spring then trim them back to promote new growth and control their size.

Fertilize your seasonal color



Seasonal color are heavy feeders. Apply a granular fertilizer to keep them looking healthy!!!



SPRING COLOR



Locally grown Spring annual color available NOW!!!!

Angelonia, Begonia, Coleus, Celosia, Dianthus, Geranium, Salvia, Impatiens, Lantana, Marigold, Petunia, Verbena, and Zinnia.

4" Flats, 6" and baskets available!

Caladium, Penta, and Vinca coming in MAY

View our entire catalog and weekly availability on our website

www.PlantTechBR.com

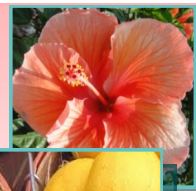


TROPICALS and Citrus are HERE !!



Tropicals: Bougainvillea, Cordyline, Dipladenia, Hibiscus, Mandevilla, Macho Fern and Boston Fern

Citrus: Orange, Satsuma, Fig, Lemon, Kumquat, Lime, Grapefruit



Locally Grown VEGETABLES and HERBS



7 types of Tomatoes, 7 types of Peppers, Cucumber, Zucchini, Squash, Eggplant and Herbs.

*****Know where your food is coming from.*****

Bag compost, manure and Organic Fertilizers are also available at Plant Tech.

